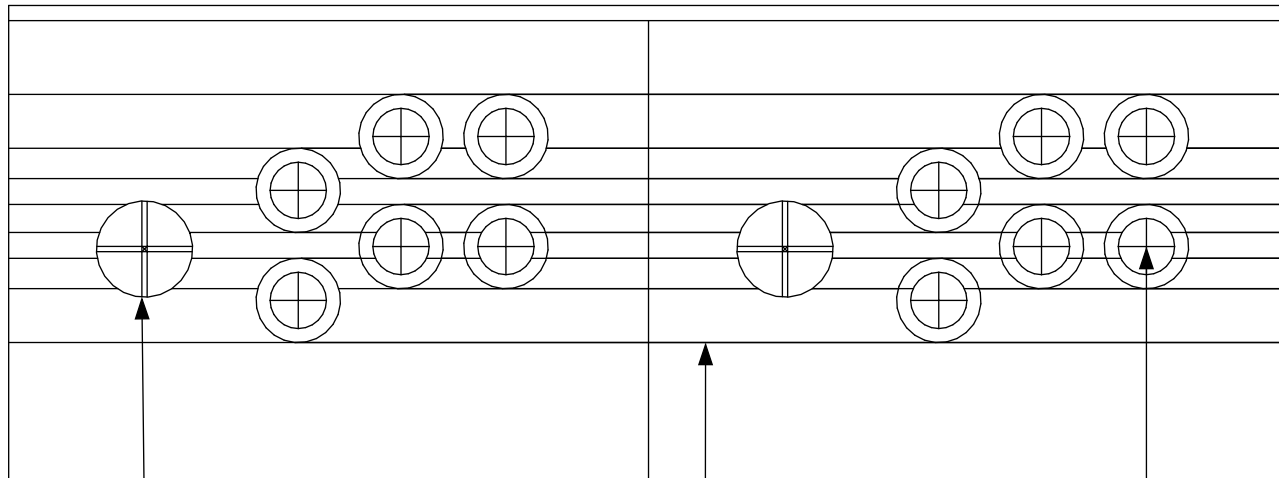


# Galactic STARCADE

## 1:1 Control Panel Blueprints



joystick drawn this size for reference only, drill a hole big enough to enable free movement in all 8 directions when the stick is mounted. approx 12mm should do it but make sure to test fit first!

these horizontal lines are layout guidelines only, not to be cut in any way

drill at centre mark, most arcade buttons will fit snugly into a 28mm mounting hole

1. Print this PDF on A4 paper, making sure scale is set to 100%

2. Tape the two sheets together

3. Use as full scale reference guide to mark and drill control panel

N.B. More details on the Instructable  
[www.instructables.com/id/2-Player-Bartop-Arcade-Machine-Powered-by-Pi/](http://www.instructables.com/id/2-Player-Bartop-Arcade-Machine-Powered-by-Pi/)

*Rolfebox*



